

## Firmware Upgrade Tool for G460 Gas Detectors

To upgrade the firmware in a G460 you must have a charging cradle and a GfG data cable. The data cable is distributed with the G460 data download software kit.

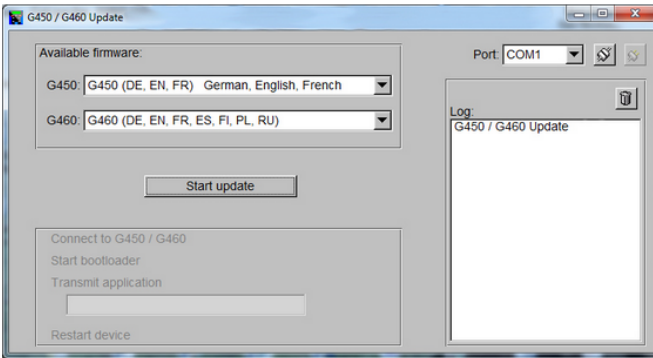
Please refer to G460 data download software page for details.

Below are the instructions for downloading the G460 firmware Upgrade Tool.

Note: Depending on the computer configuration an administrative log-in may be required.

**Caution:** Always be sure to verify sensor alarm settings and any personalized settings in your monitor after performing a firmware update. These settings could revert to factory default settings when performing an update.

Please consult GfG Instrumentation service if your instrument firmware version is 3.16 or below for firmware update options.



## G460 Firmware Upgrade Program

Document Type: Zipped Executable (EXE)  
Version: 3.46  
Release Date: 02/16/17  
File Size: 1 MB

1. Download the G460 firmware Upgrade Tool by clicking on the file name and saving it.  
Make a note of the location where it is saved.
2. Make sure the G460 is placed in a charging cradle and that the GfG USB cable is connected between the cradle and the computer.  
If the "New Hardware Found" wizard starts when the cable is connected to the computer then you must first complete the driver installation using only GfG Drivers. DO NOT allow windows to install drivers automatically.
3. Using Windows Explorer (My Computer) navigate to the folder where the downloaded file was stored.
4. Double click on the file to start the Upgrade Tool.  
The program does not require installation and can be executed directly.
5. Select the GfG COM port (this is usually the last one on the list) and click connect.  
If not, you selected the wrong COM port or otherwise do not have a connection or the drivers were installed incorrectly the connection will fail.
6. Click the [Start Update] button.  
The G460 should chirp and a progress bar on the screen should indicate to state of the process.  
If not you selected the wrong COM port or otherwise do not have a connection or the drivers were installed incorrectly. Do not disconnect the cable or remove the G460 until the process is complete (approximately 60 seconds).
7. Once the process is complete the instrument will chirp again and restart.  
The new firmware version will be displayed on the first screen as the G460 is starting up.