

# Boiler rooms as a source of danger

Even a small gas leak in a heating system can have serious consequences. Gas detection solutions should therefore be considered for small plants as well.

Gas boilers, regardless of their size, pose a potential risk. Particularly as in many cases, heating rooms are rarely entered and dangerous gas concentrations can thus build up before anyone becomes aware of the leak due to the odorants in the gas.

For this reason, safety regulations regarding the monitoring of flammable and explosive gases have been extended to ever smaller installations in recent years. In addition, it was recommended that appropriate protective measures should also be taken for plants that have not been regulated so far.

## Safety does not cost much

We would be happy to support you in planning a solution tailored to your requirements and advise you on legal requirements, the number and placement of measuring points as well as suitable countermeasures in the event of an alarm.

Would you like to learn more about our products?

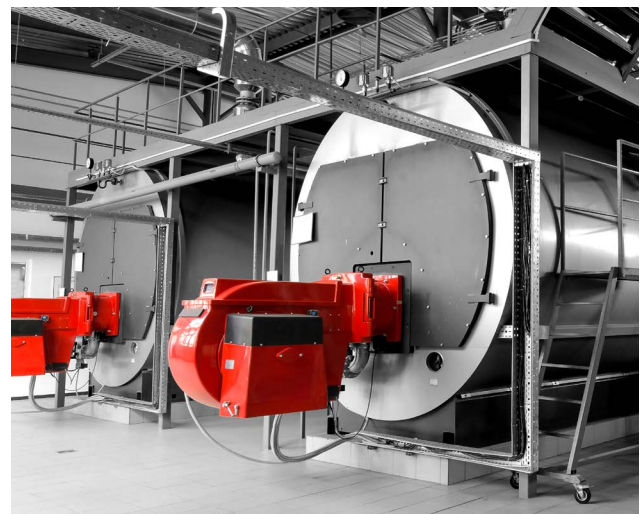
Ask our experts

Dear readers,

As useful as gases are for many applications, their usage always harbors dangers as well. We would like to keep you up to date with trends and developments around this topic with our newsletter from now on. Yours sincerely,



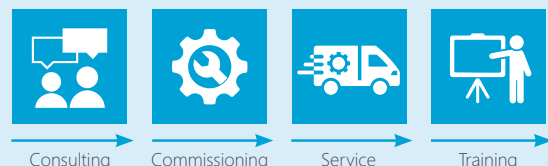
*Hans-Jörg Hübner*  
Hans-Jörg Hübner, President CEO  
GfG (Pty) Ltd



## Did you know ...?

GfG supports you from planning to safe operation.

Safety is the combination of the right technology, competent advice, good planning, individual support during commissioning, and reliable maintenance throughout the entire operating life. We assist you with each of these steps.



# A perfect team, not only for boiler houses

For gas detection systems with up to four measuring points, the combination of a GMA22 and transmitters from GfG is the right choice.

For example, if smaller boiler rooms are involved, the combination of a GMA22 and the CC22 ex transmitters, which are approved for Ex zones, is advisable. However, this does not only apply to boiler houses and boiler rooms, but is relevant wherever flammable and explosive gases need to be monitored locally.

The GMA22 controller offers operating convenience and alarm functions in a robust design for wall mounting. The housing is protected against dust and splash water (IP64). Transmitters can be connected analogue or digital. The integrated data logger records measured values and alarms.

However, the controller is not limited to monitoring combustible gases, because all GfG transmitters and sensors can be connected to the GMA22 for the detection of numerous toxic and flammable gases as well as oxygen.

Curious about our products?

[Learn more](#)



## Ready to support you!

During the Covid 19 pandemic, safety is a priority. GfG maintains the highest standards of hygiene to ensure that our products and services continue to be available to you.

# Gas hazards in Ex zones

Safe and reliable detection of flammable gases

Particularly hazardous areas require specialised gas detectors. The CC22 ex transmitter is designed for use in Ex zone 2. It is also designed to be space-saving and resistant (protection class IP65).

Depending on the sensor installed, the CC22 ex detects explosive gases and vapours such as methane, propane and butane and transmits the measured values via a digital Modbus interface (RS-485) to the connected controller.

Would you like to learn more about the CC22 ex transmitter?

[Learn more](#)



## GfG (Pty) Ltd

7 Voortrekker Road,  
Mindalore North - Krugersdorp  
P. O. Box 6004 | ZA-Westgate 1734

Phone: +27 11 955-4862

Fax: +27 11 955-4741

E-mail: [info@gfg.co.za](mailto:info@gfg.co.za)

smart  
GasDetection  
Technologies 

 Follow us on  
LinkedIn

[GfGsafety.com](http://GfGsafety.com)